



# RWS 9,3x74 R Evolution Green 11,9g

Item no. 2318329



## Field of applications

*Very well suited for* Red deer, Fallow deer, Wild boar, Chamois  
*Well qualified for* Bear, Elk, Oryx, Roe deer

## Properties

*Type of bullet: Lead* / Partial fragmentation bullet - leadfree  
*Leadfree*  
*Characteristics* Outstanding knock down power - leadfree!  
*Grain* Light  
*Preservation of the game's meat* Different  
*Stopping effect* Very high  
*Recoil* Medium  
*Penetration* Medium  
*Likelihood of exit hole* Certain  
*Cutting of hair at point of impact* Yes

## MRD

		50 m	100 m	150 m	200 m	250 m	300 m
	100 m	0.0	±0	-4.0	-13.0	-27.0	-49.0
MRD	168 m	1.0	4.0	2.0	-5.0	-18.0	-37.0



## Velocity & Energy

	0 m	50 m	100 m	150 m	200 m	250 m	300 m
V[m/s]	835	787	740	695	652	611	571
E[J]	4148	3685	3258	2874	2529	2221	1940

## 9,3x74 R

The 9.3x74 R is an excellent large game cartridge for break-open guns, no matter whether break-open rifle, over-and-under rifle drilling, drilling or double rifle. In combination guns hunters like to use it with a smaller cartridge suitable for roe deer (e. g. in a barrel insert). It can be shot well from light weapons, and it is especially appreciated as a drive hunting cartridge in double rifles or double rifle drillings.

The 9.3x74 R is the companion version of the 9.3x62, and they both were introduced at about the same time at the turn of the 19th to the 20th century. The performance of the two cartridges is practically identical.





## Evolution Green-bullet

Both cores of the new lead-free EVOLUTION GREEN bullet are made of food-safe metal. The new lead-free EVOLUTION GREEN bullet is especially effective given its outstanding responsiveness. This is achieved through a specially pre-fragmented front core made of tin and the use of RWS' new Speed Tip bullet points which enable an impressive shock effect. This will guarantee humane and successful hunting.

Even at long ranges, the EVOLUTION GREEN offers impressive killing effect. With conventional designs, there is a tangible decrease in deformation capability at long distances. Not so with EVO GREEN. Here, this effect is noticeably reduced thanks to the intelligent design of the projectile.

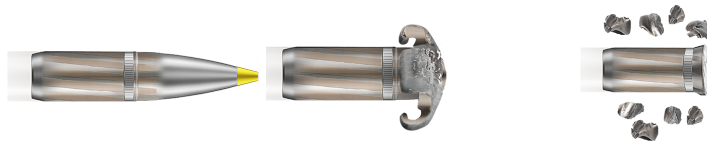
An optimised bullet form (high BC) and the speed tip ensure a flat trajectory with high levels of speed and energy.

The stable tail body ensures a guaranteed exit wound for reliable blood flow. The sharp edge also delivers the desired clean cut.



### RWS EVOLUTION GREEN at a glance:

- lead-free bullet
- hunting ammunition in calibre 6,5x55, 6,5x57, 6,5x57R, 6,5x68, .270 Win., .30 R Blaser, .300 Win. Mag., .30-06, .308 Win., 7 mm Rem. Mag., 7 x 57 R, 7 x 64, 7 x 65 R, 8 x 57 IRS, 8 x 57 IS, 8 x 68 S, 9,3 x 62, 9,3 x 74 R, 10,3x68 Mag.
- reliable and fast responsiveness
- Speed-Tip bullet point for maximum knock-down power and a flat trajectory
- Sharp edge for cutting hair at point of impact
- humane and successful hunting





## Construction Evolution Green-bullet

1. Stronger jacket for a reliable exit wound
2. Front core composed of food-safe tin with a radial pre-determined break point for reliable impact behaviour and high impact shock
3. Speed-Tip bullet point for maximum knock-down power and a flat trajectory
4. Thinner jacket for a fast, reliable response
5. Sharp edge for cutting hair at point of impact
6. Nickel-plated bullet jacket for increased barrel life
7. Stable/Impact-resistant tail core of hard tin for extreme penetration

